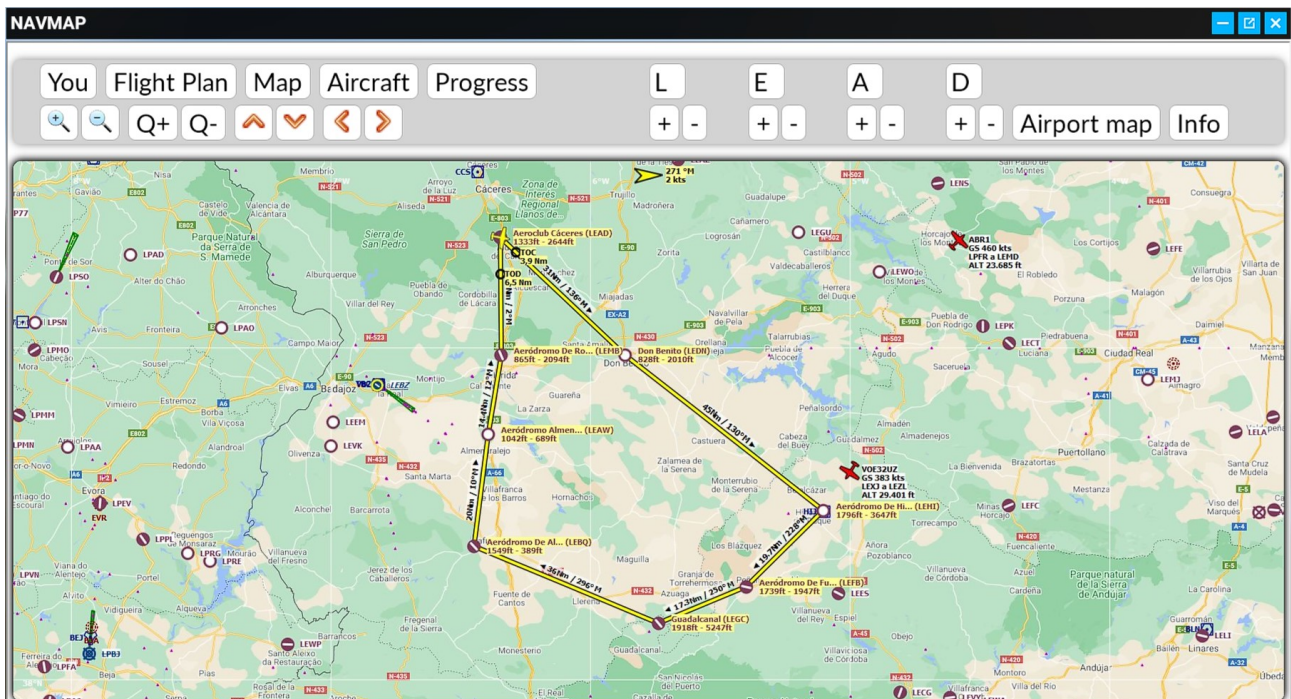


# Ingamepanel NAVMAP v2.0.1 – Microsoft Flight Simulator

Sim Update 10 compatible

The most famous and powerful utility for flight simulators now integrated into your cockpit. Using Little Navmap webserver with this new and optimized ingamepanel for Flight Simulator you will can follow your flight like from the main app, with all options:

- Background color fixed. Now minimized mode works ok.
- New font for better readability.
- Now with mouse wheel control and map movements by clicking on it.
- Any window size. You can resize the map as you like.
- OSM and basemap from Little Navmap with your favourite theme.
- Layers of airspaces, with all airports and airfields in the world, all controlled spaces, all VORs and all NDBs.
- Aircraft data and progress. All datas are updated every fraction of second.
- Airports data with METAR, frequencies, runways, services...
- Airplane movement and panel data update rate more adjusted for smoother map.
- Internal performance improvements for greater compatibility with Flight Simulator.
- Font size larger to better legibility into VR
- Resize events better
- Fully resizable window in any mode: window, full screen and VR
- The size of the buttons and the map are proportionally adapted, keeping the size of the map text always fixed.
- Now it is allowed to search any ICAO of less than 4 characters. Spaces can be inserted at any position in the name.
- v2.0 fastest ever!



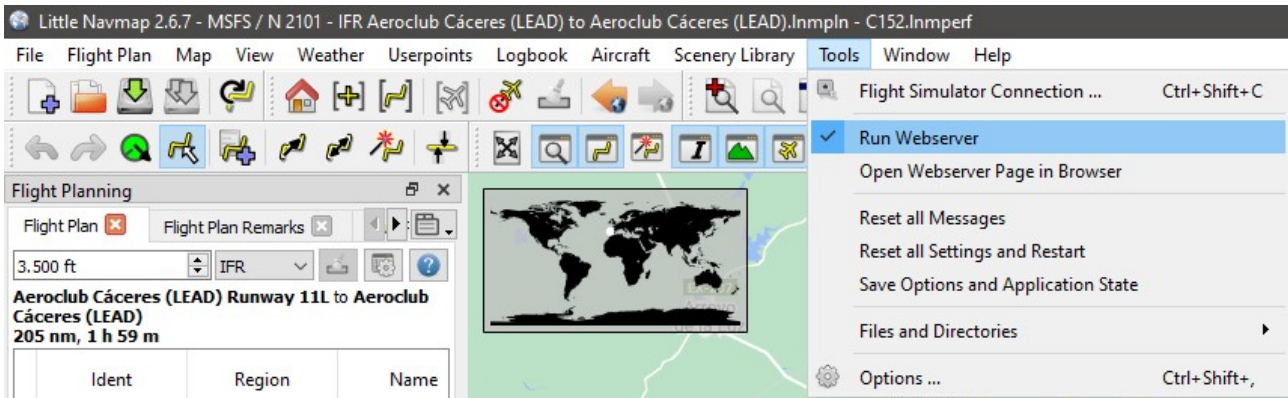
## HOW TO INSTALL

1) Unzip the folder **fs-base-ingamepanels-navmap** in the Community folder of Flight Simulator.

2) Unzip the folder **web** into your Little Navmap folder overwriting your older **web** folder.

```
\Little NavMap
|
--web
```

3) Open Little Navmap and run the webserver.



Remember open Little Navmap before starting Flight Simulator

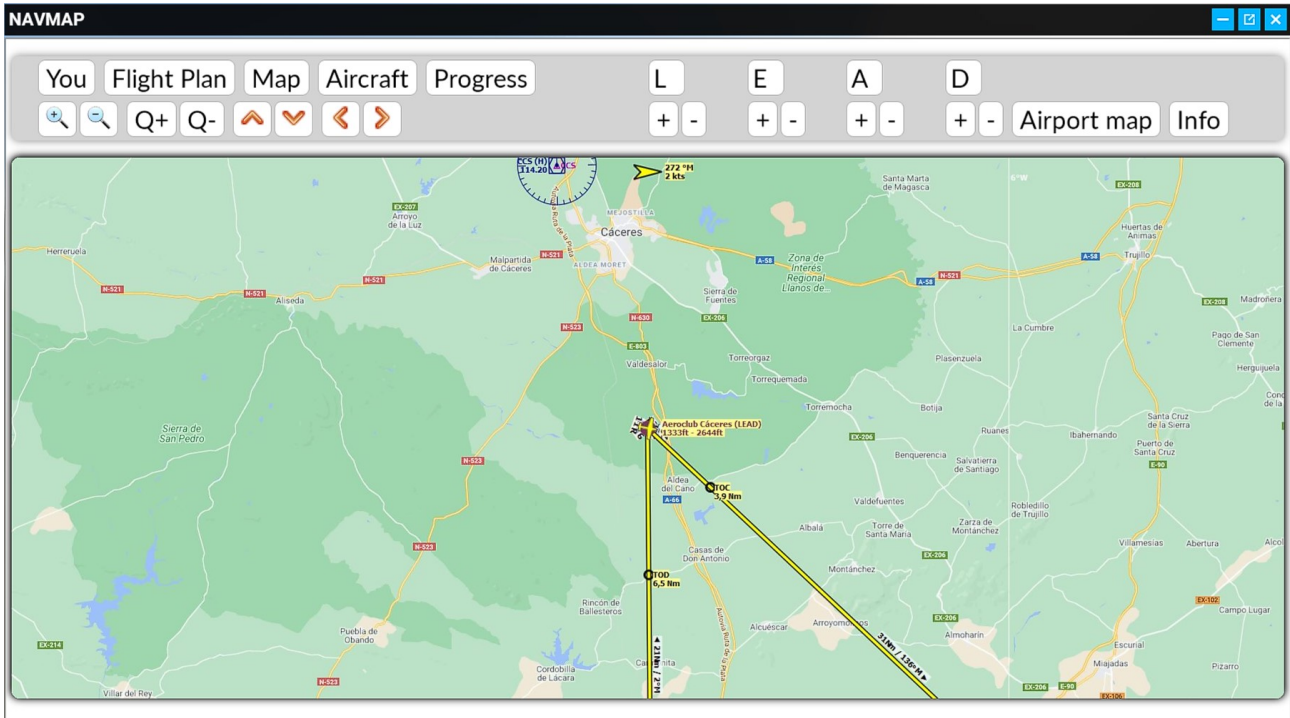
When you start the flight you will see a new option **NAVMAP** in the options panel. Click on it and the map will open.

## VERY IMPORTANT

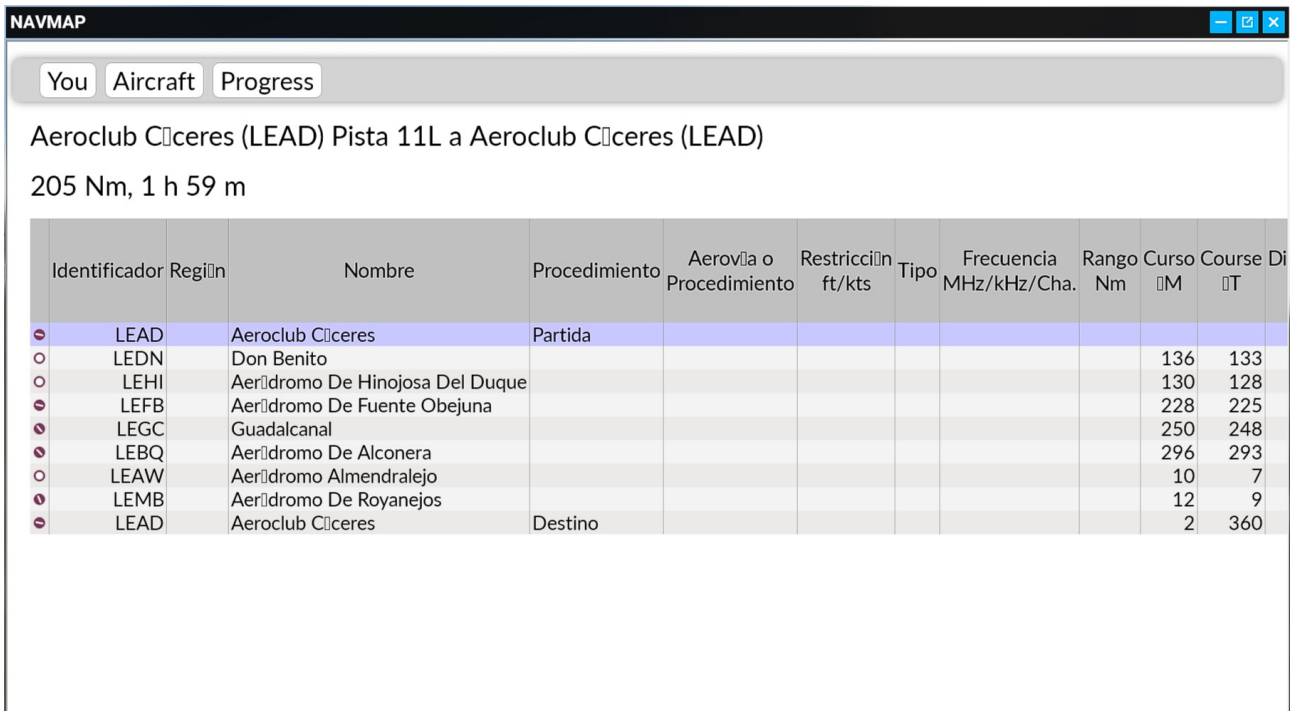
If you update your Little Navmap, you will have to copy the **web folder** again from this zip file.

# OPTIONS

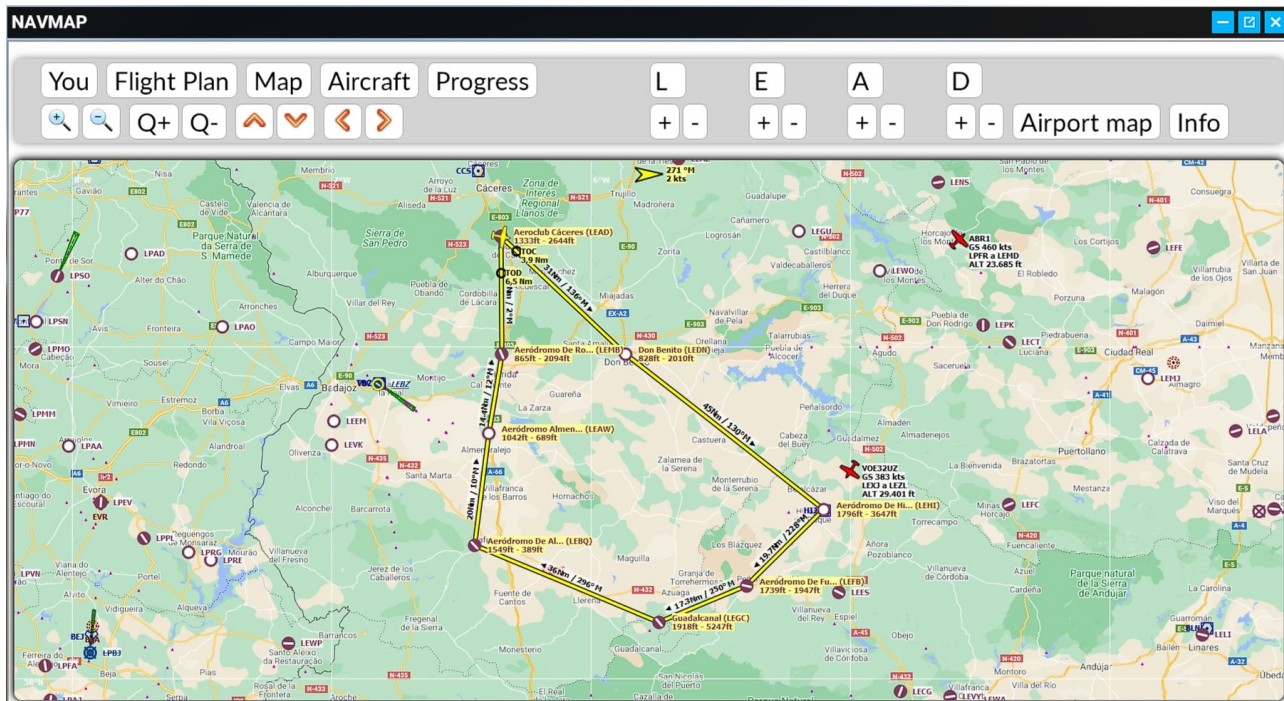
You.- Center the map and the plane will be follow.



Flight Plan.- Show all waypoints in a table of your current flight plan.



Map.- Show your current flight plan fit in the map.



Aircraft.- Show data of your plane.

NAVMAP

You Flight Plan Progress

XPE573 - Diamond, DA40

User Aeronave

Título:	DA40-NG Asobo
Línea aérea:	XPE573
Número de Vuelo:	XPE573
Tipo:	DA40
Registración:	XPE573
Modelo:	Diamond
Envergadura:	37 ft

Peso y Combustible

Máx Peso Bruto:	2.822 lbs
Peso bruto:	2.461 lbs
Peso en vacío:	1.984 lbs
Peso SIN combustible (Zero Fuel):	2.324 lbs
Total de Carga (Payload):	340 lbs
Combustible:	137 lbs, 20 gal

**Progress.** - Show current datas from your aircraft.

NAVMAP

You Flight Plan Aircraft

XPE573 - Diamond, DA40

No Active Flight Plan Leg.

Día y Hora: 21/02/2021 10:30 UTC  
Hora Local: 11:30 UTC+01:00

Aeronave

Rumbo: 103°M  
Ruta: 164°M  
Flujo de combustible: 1 pph, 0 gph

Altitud

Indicado: 1.329 ft  
Actual: 1.329 ft  
Arriba de Tierra: 4 ft  
Elevación de tierra: 1.325 ft

Velocidad

Indicado: 0 kts  
Tiempo: 0 kts

**Airport Map.** - Show the selected airport centered into the map.

NAVMAP

You Flight Plan Map Aircraft Progress L E A D + - + - + - + - Airport map Info

**Info.**- Show all information about the selected airport.

[You](#) [Flight Plan](#) [Aircraft](#) [Progress](#)

## Airport

---

[Runways](#) - [Com Frequencies](#) - [Procedures](#) - [Weather](#)

### **Aeroclub Cáceres (LEAD) ★-----**

<b>City:</b>	Aldea Del Cano
<b>Elevation:</b>	1.333 ft
<b>Magnetic declination:</b>	2,7° West
<b>Sunrise and sunset:</b>	6:42, 18:35 UTC (civil twilight, real date)
<b>Coordinates:</b>	39° 19' 45,77" N 6° 20' 50,90" W

### **Facilities**

Aprons

### **TIPS**

**Q+ and Q-** allow change the quality of the map image

**If you move the map with the orange cursors then the map won't follow the aircraft until you press "You" button again.**

**If you update the Little Navmap software, remember copy the web folder again from this zip**





[www.flightsimulator.me](http://www.flightsimulator.me)